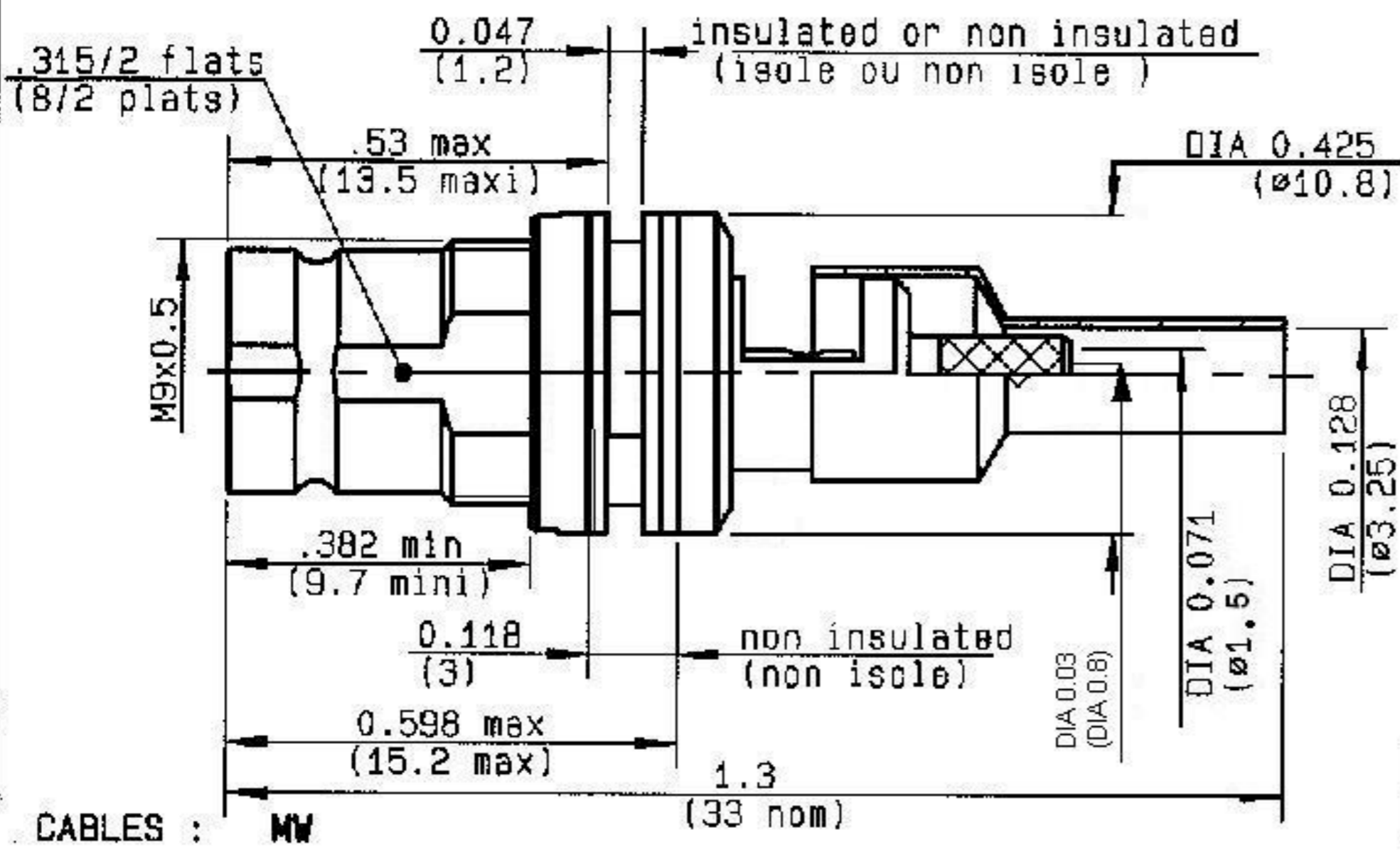
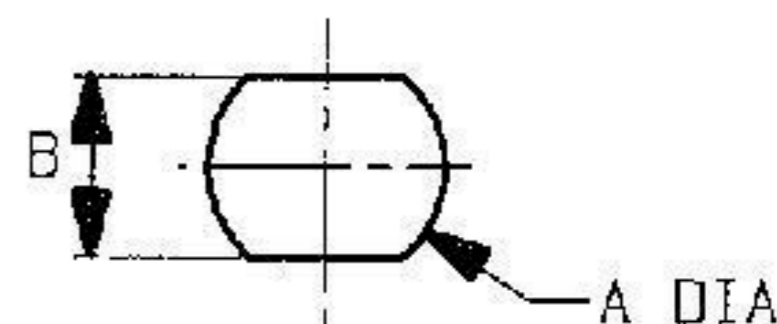


**BULKHEAD JACK CRIMP TYPE SCREW
PANEL INSULATED CABLE TYPE MW**

R129.341.000
SERIES **V1.6-5.6**



PERCAGE PANNEAU
MOUNTING HOLE



	MM		INCH	
	maxi	mini	maxi	mini
A	9.15	9.05	0.36	0.36
B	8.2	8.1	0.323	0.319

CABLES : MW (33 nom)

NOMINAL IMPEDANCE	75	Ω
FREQUENCY RANGE	0-1	GHz
TEMPERATURE RATING	-40/+125	°C
V.S.W.R	1.22 +	0 x F(GHz)Maxi
RF INSERTION LOSS	TBD	√F(GHz) dB Maxi
VOLTAGE RATING	300	Veff Maxi
DIELECTRIC WITHSTANDING VOLTAGE	1000	Veff Mini
INSULATION RESISTANCE	5000	MΩMini
HERMETIC SEAL	NA	Atm.cm ³ /s
LEAKAGE (pressurized only)	NA	
MECHANICAL DURABILITY		Cycles
WEIGHT		gr
SPECIFICATION	SAT25.238 DU 10/11/83	

CABLES :

OTHERS CHARACTERISTICS

CABLE RETENTION	70	N Mini
CENTER CONTACT RETENTION		
Axial force - mating end	30	N Mini
Axial force - opposite end	30	N Mini
Torque	NA	cm.N Mini
RECOMMENDED TORQUES		
Mating	NA	cm.N
Panel nut	80	cm.N
Clamp nut	NA	cm.N

CONNECTOR PARTS

MATERIALS

FINISH

(all values are given in micrometers)

BODY	BRASS
OUTER CONTACT	
CENTER CONTACT	BRONZE
INSULATOR	
GASKET	
OTHERS PIECES	PTFE

NICKEL + SELECTIVE GOLD
GOLD .
GOLD .
-
-

MEY R

ISSUE
0742G

CREATION DATE
12-DEC-95

FILE PART-NUMBER



RADIALL®

The information given here is subject to change without notice. Design changes may be in order to improve the product.

Connect to the future

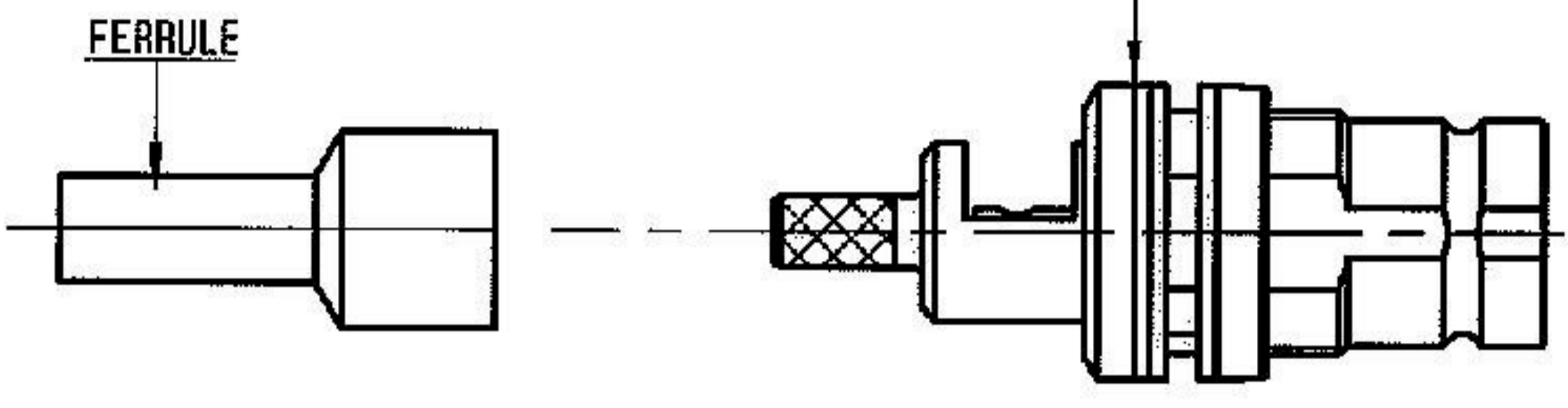
SERV. ATT.



R129.341.000

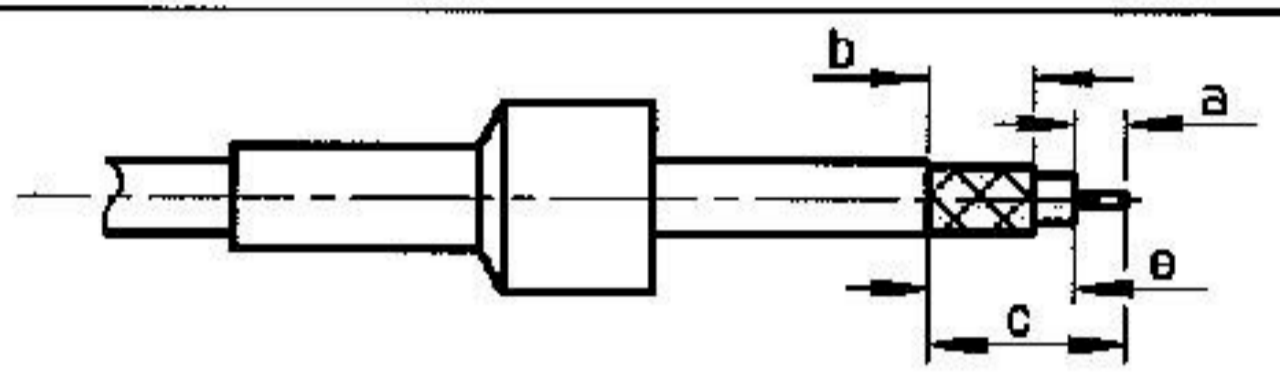
Issue : 0742

Page
2 / 2



①

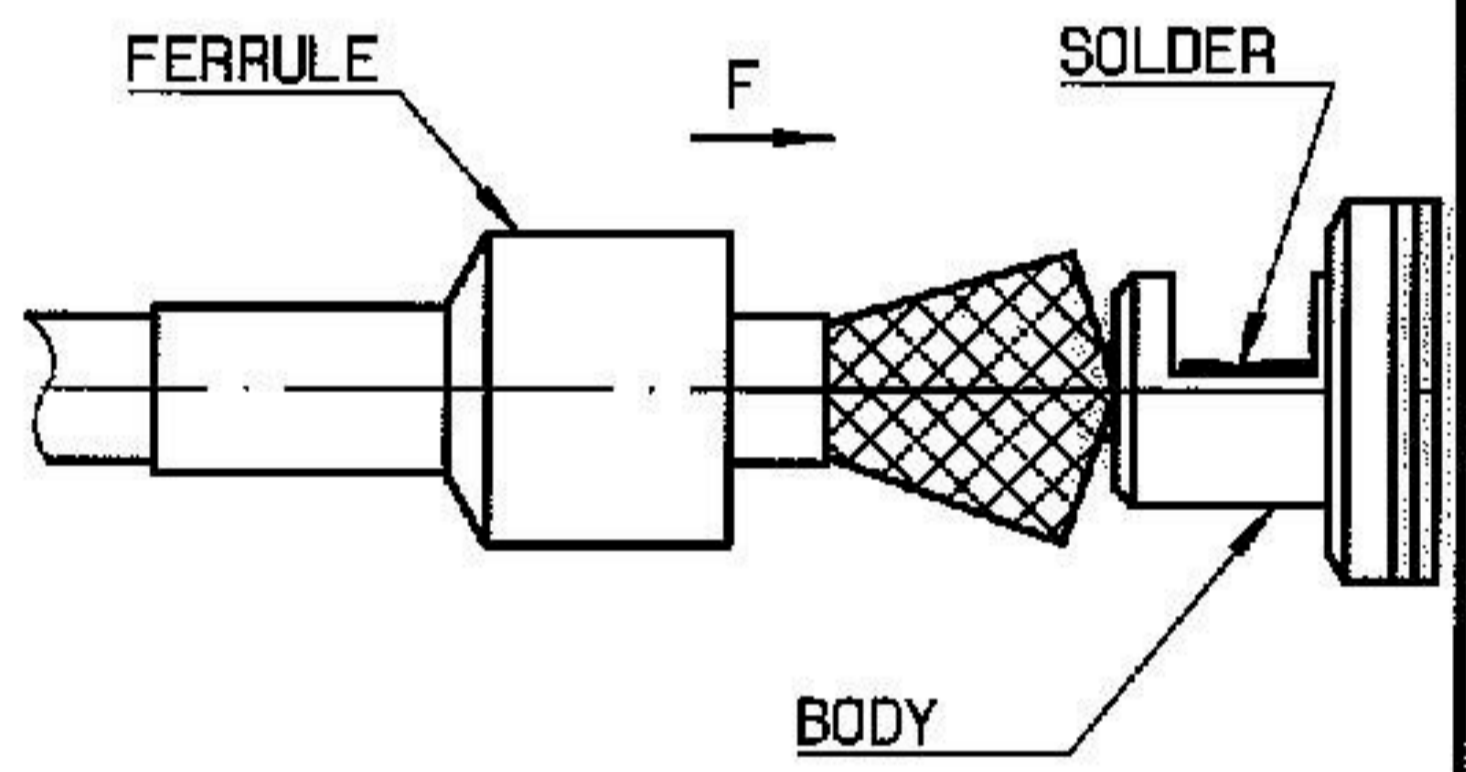
Slide onto the cable the ferrule
Strip the cable .
-
-



Stripping	a	b	c	d	e
inch	0.079	0.236	0.433	0	0
mm	2	6	11	-	-

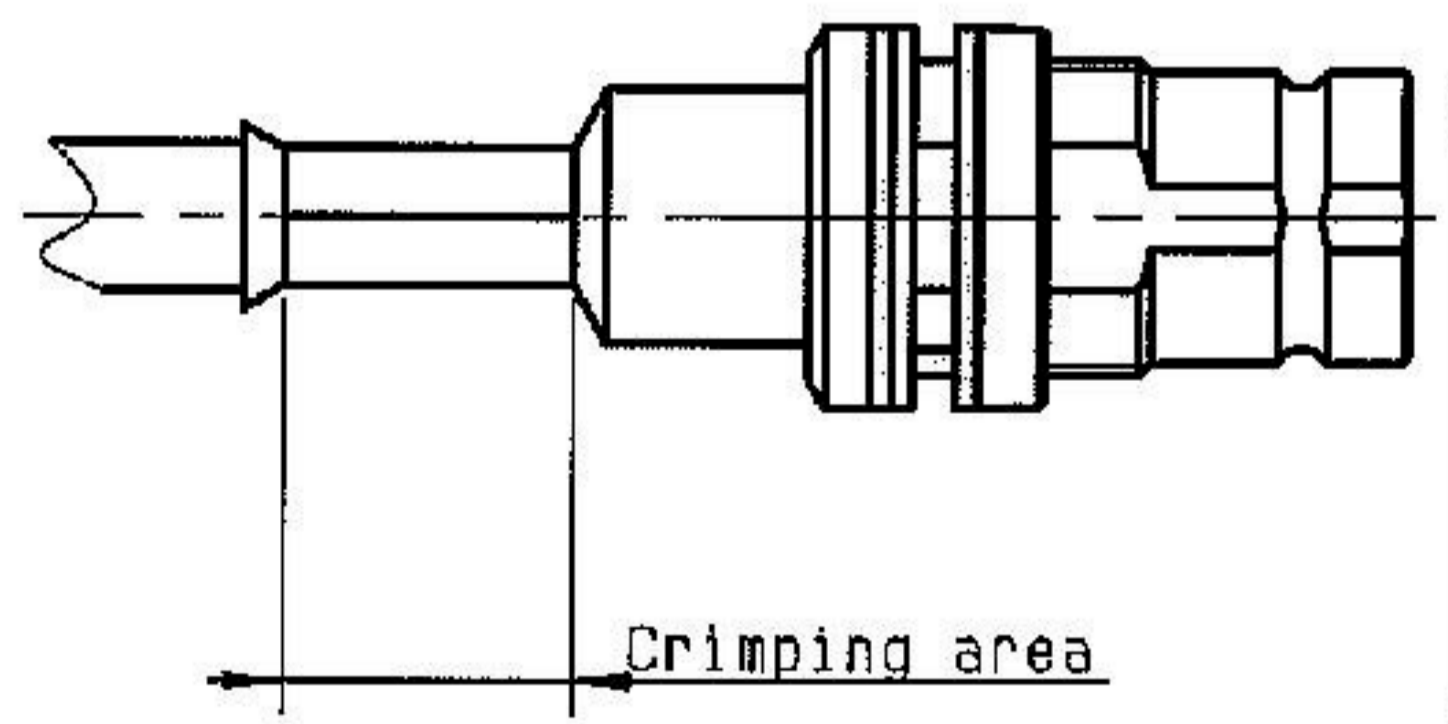
②

2-1 Fan the braid.
2-2 Slide the inner conductor of the cable
inside the centre contact.
2-3 Solder the inner conductor in the
centre contact.
2-4 Slide the ferrule over the braid
(in direction F).
-
-



③

Crimp the ferrule with crimping tool
R282 211 000 (Hex. : .128)
or crimping tool R282 293 (M22520-5-01)
+ dies R282 235 003 (M22520-5-03)
-



4 1211